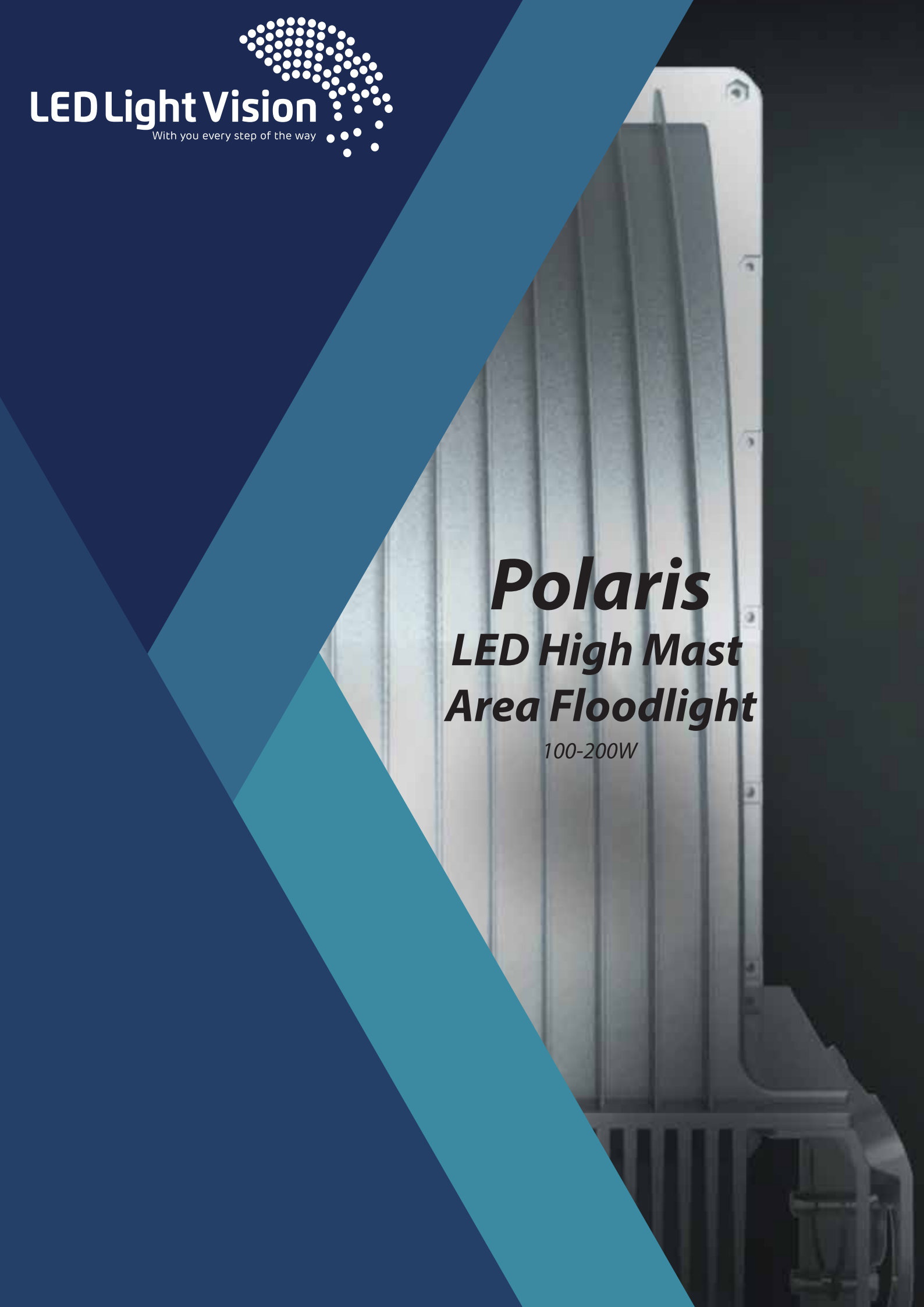




LED Light Vision

With you every step of the way



Polaris
LED High Mast
Area Floodlight

100-200W



The LED Light Vision Polaris series introduces a new innovative LED High Output Floodlight luminaire.

The asymmetrical distribution is uniquely designed to reduce glare and control the overflow of light with the use of indirect LED technology.

This is achieved by using a 98% reflective concave PVD (Physical Vapour Deposition) technology reflector.

This "V" series reflector is the most technically advanced PVD technology of metal surfaces available.

This Class 1 fixture with 130lm/w efficiency helps to deliver true color and greater visibility.

The thin, low profile, lightweight design minimizes wind load and coupled with a rugged die cast aluminum adjustable arm that mounts horizontally.

Accessories include a mounting bracket for greater mounting flexibility.

The system comes with a 10kV Surge Protection Device (SPD), which is essential protection against excessive surge voltage, due to lightning.

- Class-leading control of light for the comfort of people
- 99% reflection by using the latest PVD technology
- 100w-200w LEDs capable of delivering brightness equivalent to 250w-500w metal halide lamps
- Outstanding saving with 13lm/w
- Built in 10kV SPD surge protector
- Easy maintenance

Production Description

Applications

- Facade Lighting
- Area Lighting
- Security Lighting
- General Floodlighting

Tightness level: IP65

Nominal voltage: Midi: 100-265V 50-60Hz

Electrical Class: III (**)

Body Materials: Marine grade aluminium

Installation height: up to 30m

Electrical System

- Input Voltage: 90-305V or 180-528V, 50/60Hz, Class 1 drivers
- Power Factor: > 0.9 at full load
- Total Harmonic Distortion: < 20% at full load
- Integral 10kV surge suppression protection standard
- Power range from 100w-200w

Model Number	Rated Power	Input Voltage	Luminous Flux	CCT	CRI	Life Time	Operating Temperature
PL-MAF100N	100W	90-305VAC/180-528VAC	13000LM	2700-7000K	70/80	50,000hrs	-40-70°C
PL-MAF200N	200W	90-305VAC/180-528VAC	26000LM	2700-7000K	70/80	50,000hrs	-40-70°C

Hardware Features

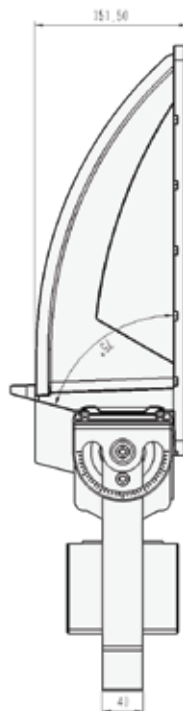
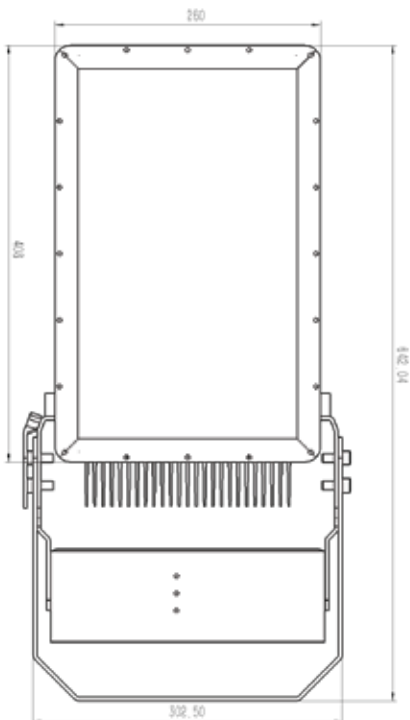


The Polaris series has a safety wire feature too

The external control box allows for quick and easy access



The adjustable fixing bracket provides control and flexibility for all types of applications (-90° to 90°)

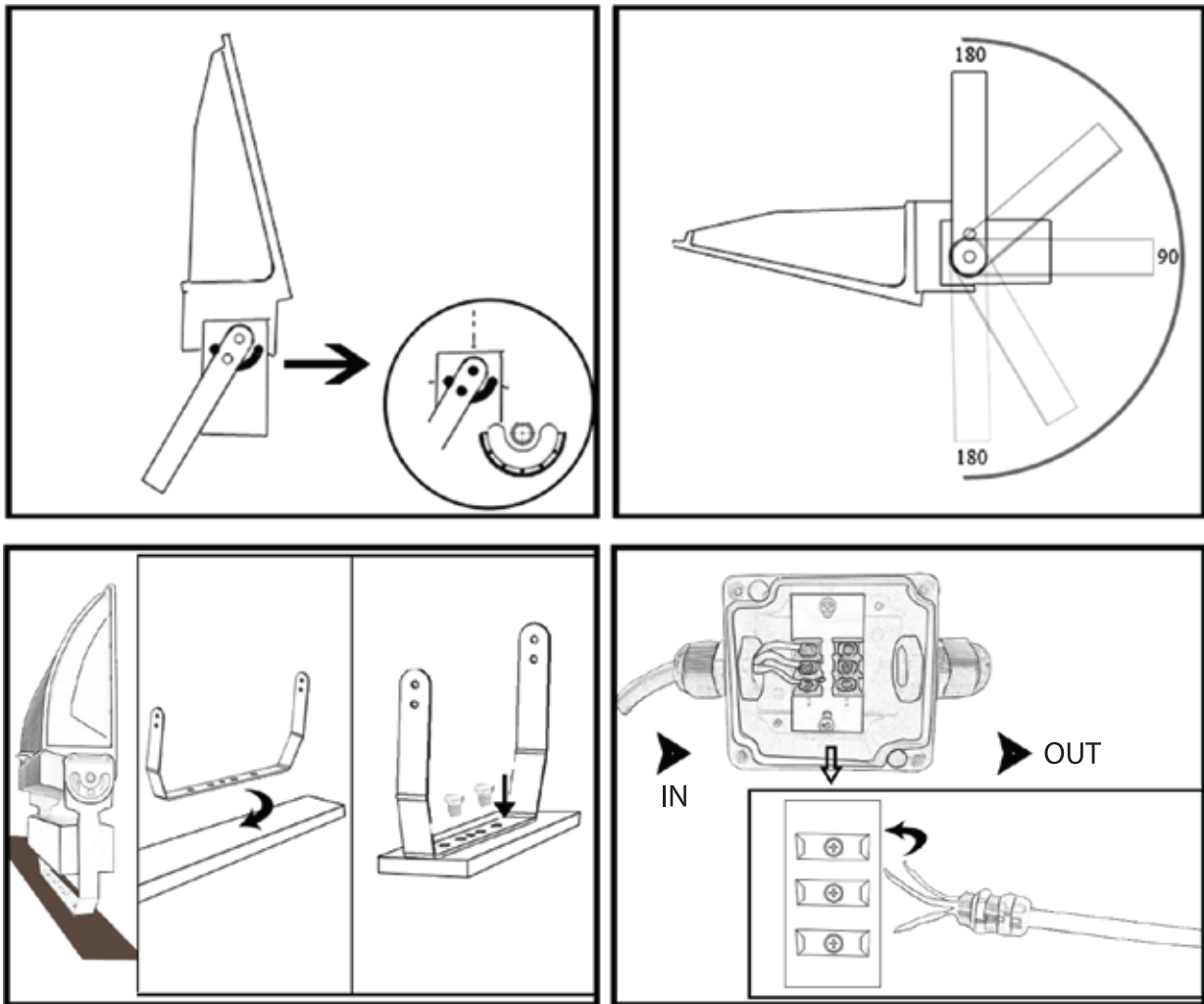


The flexible mounting bracket allows for precise aiming to avoid unnecessary light spillage





Mounting



Warning & Advisory Notices

Risk of Electric Shock

- Turn power off before inspection, installation or removal
- Properly ground electrical enclosure

Risk of Fire

- Follow all NEC and local codes
- Use only UL or IEC approved for input/output connections. Minimum size 18 AWG.

Member of
theLIA



48 Boston Road, Gorse Hill Industrial Estate,
Leicester - LE4 1AA

☎ +44(0)116 2347029

✉ sales@ledlightvision.co.uk

Part of the BPC Group of companies



LEDLightVisionUK



@LedLightVision1



www.ledlightvision.co.uk