

# VALTO Series - Features & Benefits

The first and only High Bay LED Magnetic Ballast compatible retrofit technology available - **no electrical rewiring required**

Weighs in at only 1.65 Kg

105w version operates at 143 lumens per watt

150w version operates at 130 lumens per watt

Low Glare

Fanless cooling system

1-10v dimming standard option



Wi-Fi technology as standard

5 years or 50,000 hours warranty

Safety harness option

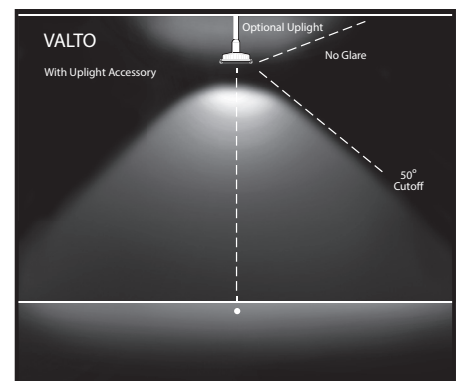
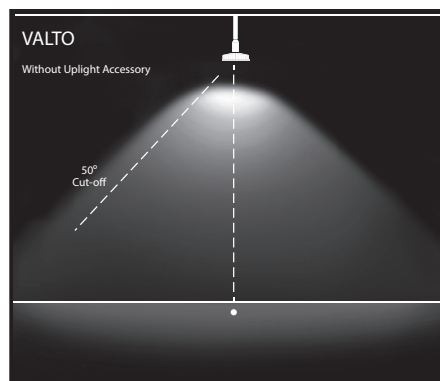
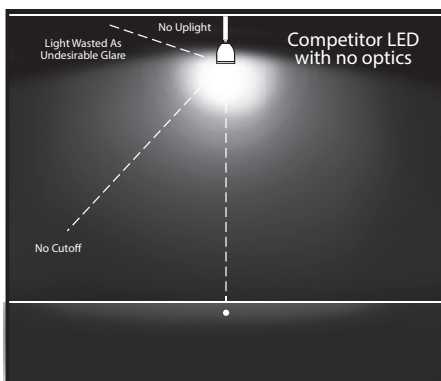
Fully reversible trials available on request

Fully compliant

Halo reflector option for improved light distribution

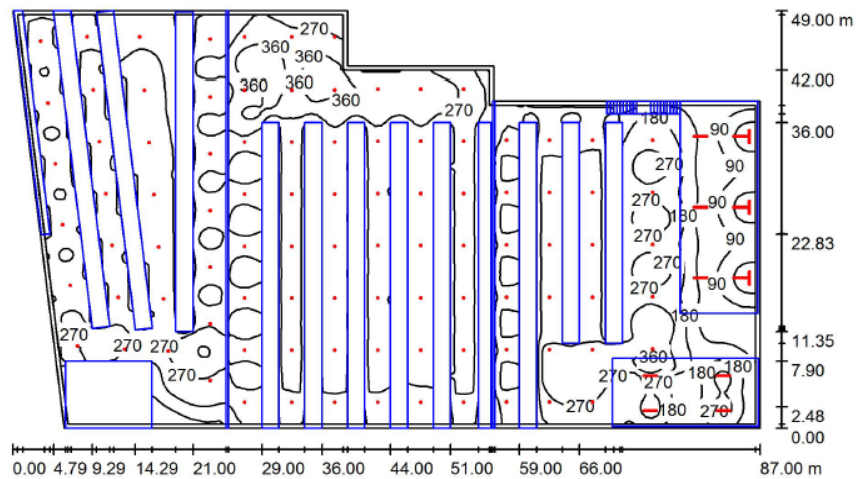
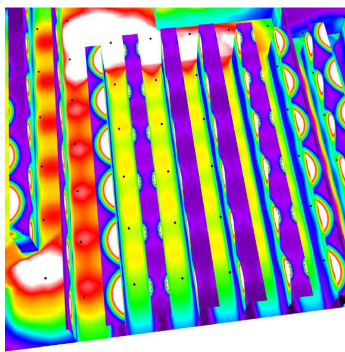
Up to 80% energy saving

4000k & 5000k colour temperature



# VALTO Series - Warehouse Comparisons

## 105w VALTO Lighting Simulation



Height of Room: 9.200 m, Maintenance factor: 0.80

Values in Lux, Scale 1:630

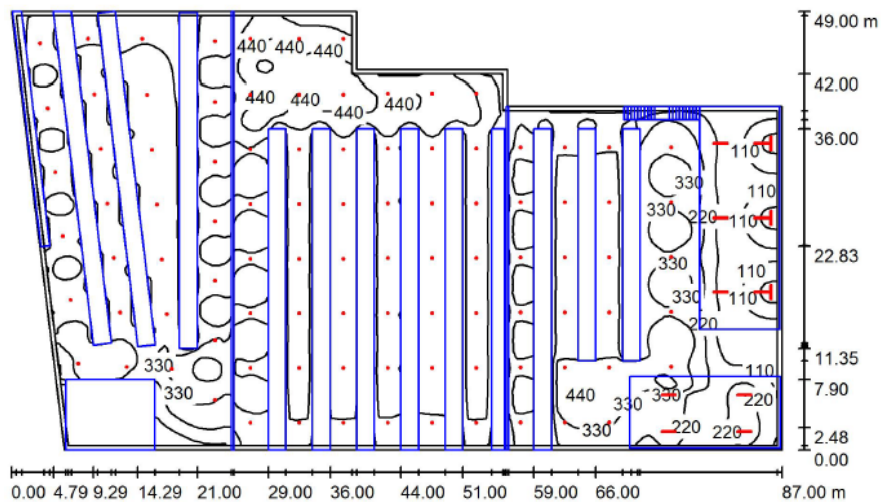
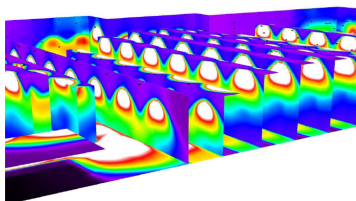
Surface	$\rho$ [%]	$E_{av}$ [lx]	$E_{min}$ [lx]	$E_{max}$ [lx]	$u0$
Workplane	/	220	14	433	0.062
Floor	20	153	0.91	403	0.006
Ceiling	70	39	18	83	0.477
Walls (8)	50	64	5.46	620	/

### Workplane:

Height: 0.750 m  
Grid: 128 x 128 Points  
Boundary Zone: 0.500 m

Illuminance Quotient (according to LG7): Walls / Working Plane: 0.289, Ceiling / Working Plane: 0.176.

## 150w VALTO Lighting Simulation



Height of Room: 9.200 m, Maintenance factor: 0.80

Values in Lux, Scale 1:630

Surface	$\rho$ [%]	$E_{av}$ [lx]	$E_{min}$ [lx]	$E_{max}$ [lx]	$u0$
Workplane	/	280	18	564	0.063
Floor	20	194	1.17	524	0.006
Ceiling	70	48	20	83	0.424
Walls (8)	50	78	7.25	807	/

### Workplane:

Height: 0.750 m  
Grid: 128 x 128 Points  
Boundary Zone: 0.500 m

Illuminance Quotient (according to LG7): Walls / Working Plane: 0.276, Ceiling / Working Plane: 0.173.